

The logo for RINTRIX features a stylized green 'R' composed of three parallel, slanted lines. To its right, the word 'RINTRIX' is written in a bold, white, sans-serif font with a blocky, geometric appearance.

RINTRIX
INSTALLATION MANUAL

MINI COOPER R56 / R57 / R58 / R89

Congratulations on becoming part of the Armytrix Family! Our valvetronic exhaust will enhance the excitement of your driving experience. Backed by veteran engineers, each exhaust is designed to optimize flow and raise the bar to the next level. Through premier craftsmanship, the full system operates in total unison for maximum effect. Automotive Weaponized, the dawn of an era.

Please read the entire installation manual before proceeding to install your new Armytrix product. If you do not fully understand the content, please contact your authorized dealer! This product should be installed by someone with sufficient knowledge and with the appropriate equipment. If you are not qualified, please utilize certified personnel for the installation.

It is your responsibility to follow all installation instructions provided by Armytrix and have undertaken all necessary safety precautions. Armytrix assumes no responsibility for damages occurring from, improper installation, improper operation, lack of responsible care, or incompatibility with other manufacturer's products and/or systems.

BEFORE INSTALL

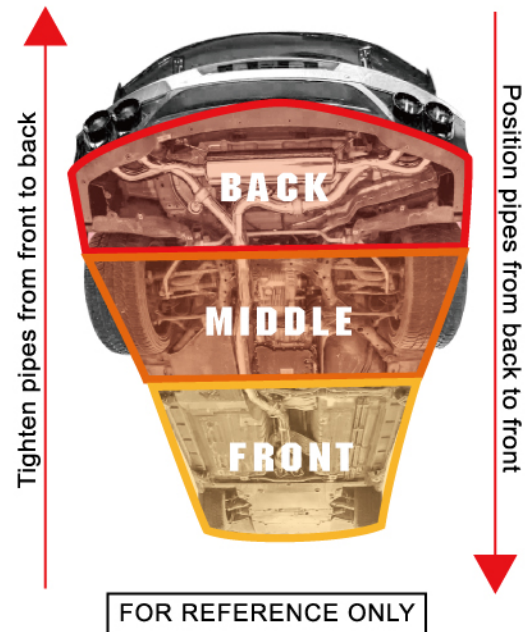
1. Confirm you have received everything on the Packing List.
2. Follow safety protocols and exercise common sense to avoid injury.

DURING INSTALL

1. Position the exhaust in a way where the hangers are inclined toward the front of the vehicle by 10-15mm. Thermal expansion will lock the exhaust into the correct location.
2. Maintain proper spacing around the exhaust, as heat may cause expansion as much as 25mm.
3. When the exhaust is in the correct position, lock in the position from FRONT TO BACK. Adjust where necessary and do not over tighten the clamps for flexibility.

AFTER INSTALL

1. Start up the vehicle and wait until it is properly warmed up. Inspect the exhaust for any abnormalities.
2. Through test driving, ensure the exhaust has been properly installed and operating smoothly. There should be no odd noises and the valves function as they should.
3. Each exhaust has been tested repeatedly to ensure exact fitment. If you encounter irregularities, return to the shop to eradicate the cause.



INSPECT THE FOLLOWING ITEMS >>>

Exhaust Parts:

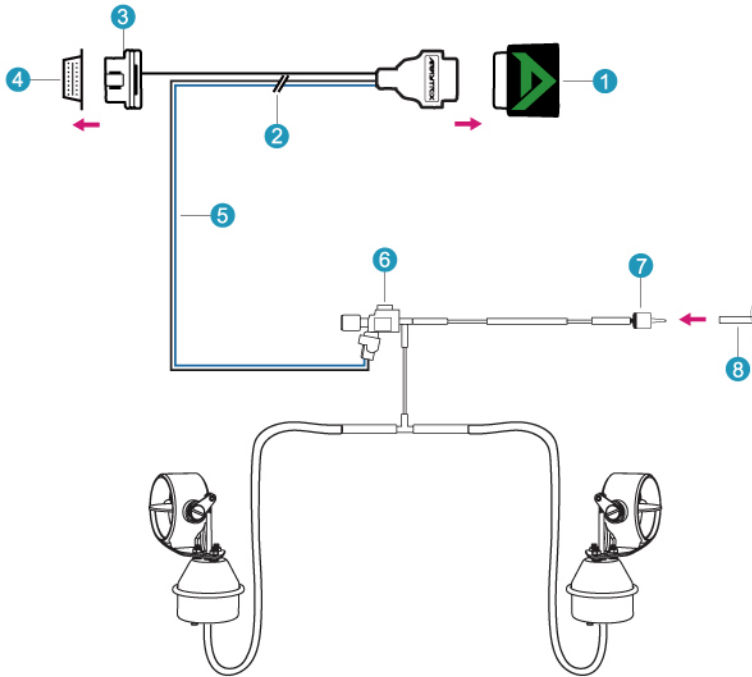
- 1 Front Pipe x 1
- 2 Mid-Pipe x 1
- 3 Tips x 2 (Blue/Black/Silver)
- 4 Valvetronic Muffler x 1
- 5 Wireless Remote Control Kit x 1



Wireless Remote Control Kits:

- ▶ Key Fob Control x1
- ▶ OBD2 Dongle x1
- ▶ Solenoid Wire x1
- ▶ OBD2 Connector x1
- ▶ Solenoid Valve x1
- ▶ One-Way Valve x1
- ▶ Nylon Cable Ties x15
- ▶ Silicone Tube x1
- ▶ Three-Way Connector x2
- ▶ Gasket x1
- ▶ M10*35/30 Screw x2

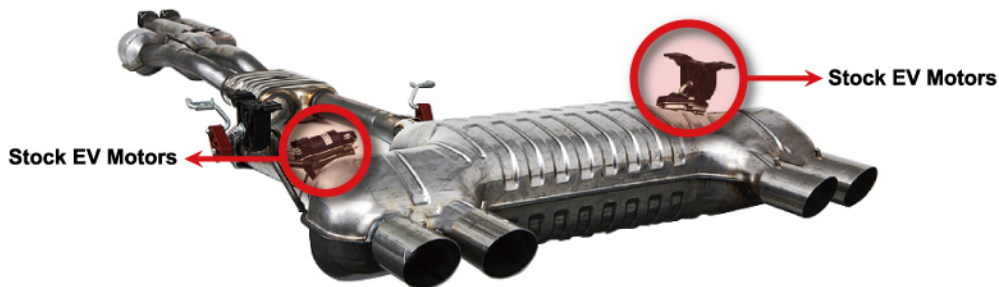
VACUUM LINE AND OBDII DIAGRAM >>>



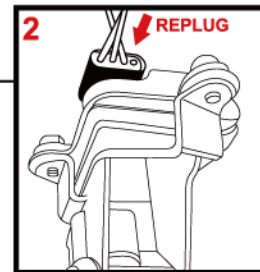
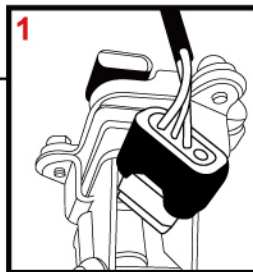
- 1 Bluetooth Dongle
- 2 Connector
- 3 OBDII Plug
- 4 Vehicle OBDII Port
- 5 Black & Blue Extension Cable
- 6 Solenoid Valve
- 7 One-Way Valve
- 8 Stock Vacuum Source

MUST REPLUG YOUR STOCK EV MOTORS >>>

! Some models do not have factory EV Motors, please consult your installer/specialist for more information. If this is not applicable, please ignore this instruction and move on to the next page.



*The image is for representation only. Actual parts may vary.



⚠ IMPORTANT NOTICE

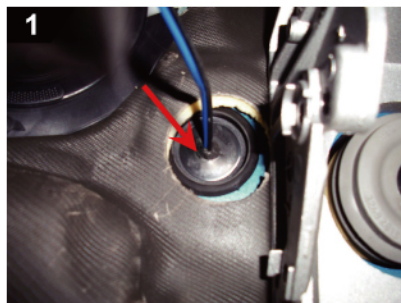
1. Remove the Stock EV Motors from the stock exhaust.
2. MUST reconnect Stock EV Motors to its original wire before starting the engine.
3. Safely secure the Stock EV Motors in a waterproof location.



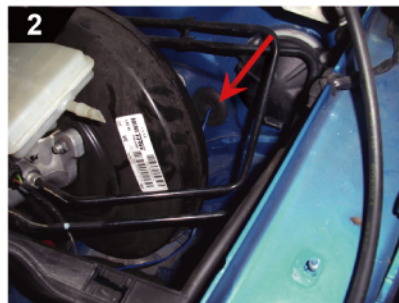
WIRING INSTRUCTIONS STEP BY STEP

STEP 1

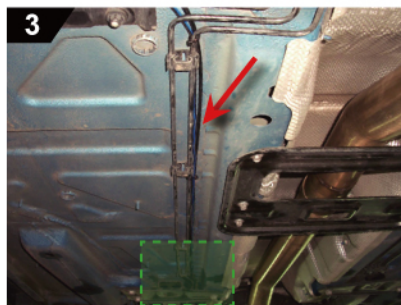
STEP 2



► Thread the cable through the rubber



► Overview of the position



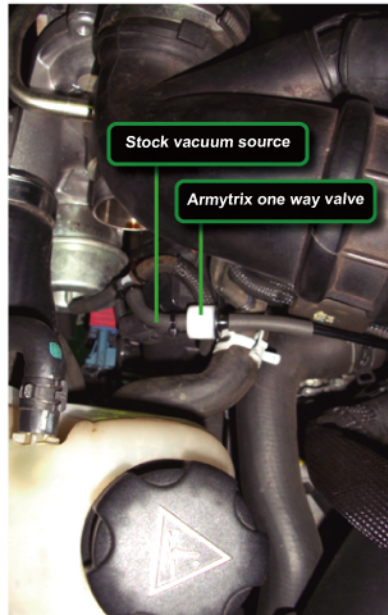
► Position the cable as shown



► Secure the solenoid valve as shown

STEP 1

STEP 2



► Connect vacuum tube as shown

ARMYTRIX CREED

From simple admiration of cars to creating our own aftermarket automotive brand, Armytrix is a company founded by enthusiasts for the enthusiasts. With uncompromising determination, we go where others can only dream of, to achieve what was thought impossible. This undaunted spirit has propelled our rise and fueled our desire to achieve even greater feats.

The Armytrix name and insignia draw from many influences and inspirations. Our name is the result of combining the words, Army and Matrix. Representing our intent to weaponize your vehicle with sophistications that will shatter your preconceive notion of performance. The sharp and futuristic insignia design and fonts epitomize our unwavering resolve to cut through chatter and provide you the key to true performance liberation.

Armytrix is never one to stand still. Our motorsport arsenal is ever evolving, a catalogue of titanium and stainless steel Valvetronic Exhausts, ECU Recalibration, Power Box, CEL Delete Module and Mobile APP. We are committed to touch every spectrum excellence, dedicated to bring the best enhancements to fulfill your every driving needs and desires.

ARMYTRIX RELATED PRODUCTS



ARMYTRIX EXHAUST

There's nothing quite like it. Uncompromising power and refined sound that transcend all expectations. Our valvetronic exhaust makes your car feels just right.



ARMYTRON POWER BOX

All the power you want all-in-one box. Uncompromising power and mesmerizing sound, all in a Plug-n-Play setup for quick and simple install.



ARMYTRIX ECU TUNING

The only change is everything. Our expert tuners compose a full and detailed optimization of your vehicle's ECU. Re-envision the way you see performance.



ARMYNATOR CEL DELETE DONGLE

Subtly brilliant, the dongle quietly and precisely detect CEL codes and terminates them with extreme prejudice. So, you can take your drive even further.

EXHAUST WARRANTY

ARMYTRIX CORP. warrants its products to be free of all defects in material and workmanship. Warranty extends only to the original buyer with proof of purchase and for the original vehicle on which the product(s) was installed. The warranty is not transferable and is valid for 12 months from the date of shipment. All shipping charges and duty fees associated with this warranty are the sole responsibility of the customer.

Upon receiving the product(s), it is the buyer's personal responsibility to examine the conditions of the part(s) prior to installation. If any part(s) proving defective in material and/or workmanship, the buyer must document the defect(s), contact Armytrix immediately and return the product(s) within 30 days. We will replace all defective items free of charge, but the transportation cost incurred will be at buyer's own expense. We reserve the right to withhold issuance of credit until defective part(s) has been returned and examined to determine reason of failure.

Warranty shall be considered void if damages to the product(s) were due to improper use, including, but not limited to: off-roading, racing, unauthorized alterations to the product(s), lack of care, impact damage and any other damages caused by using the product(s) other than intended by the manufacturer.

Vehicle must not exceed 4,000RPM with the valves closed. This may cause irreparable damage to the exhaust and will void warranty. Armytrix cannot guarantee the check engine light will not be triggered. Activated CEL is caused by the vehicle and not the exhaust. We recommend returning dealer to sort out the malfunction. Installing incompatible ECU remaps or flame kit or any other unsuited modifications without consulting Armytrix will void warranty.

Warranty shall be considered void if unauthorized alteration and/or damage were made to the product due to inadequate procedure. Armytrix exhaust must be installed by certified technician(s), with prior knowledge of subject vehicle, to maintain warranty status.

Armytrix will not be responsible for any everyday wear-and-tear damages that occur in normal driving conditions; including, not limited to: man-made or natural damages to external surface, internal deterioration, discoloration, rust and corrosion. Wear-and-tears are unavoidable; we recommend regular check-ups and care to extend the product(s) lifespan and maintain its performance.

RETURN POLICY

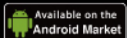
Under the coverage of the warranty, all return must be done within 30 days. Once the defect product(s) is received it will take 7-14 days to process and determine the cause of failure. If defect is caused faulty manufacturing or fitment then you will be eligible to exchange or refund.

We do not accept return of products based on not meeting one's personal preference including, not limited to, exhaust sound, vibration, material and color. Any item that has been installed and used will no longer be eligible to be returned under any circumstances.

The shipping cost will be the responsibility of the buyer and do pack with care; we cannot accept product damaged during the process of shipping.



ARMYTRIX
AUTOMOTIVE WEAPONIZED



www.armytrix.com | Follow us on: [instagram.com/thearmytrix](https://www.instagram.com/thearmytrix) / www.youtube.com/armytrix / www.facebook.com/armytrix