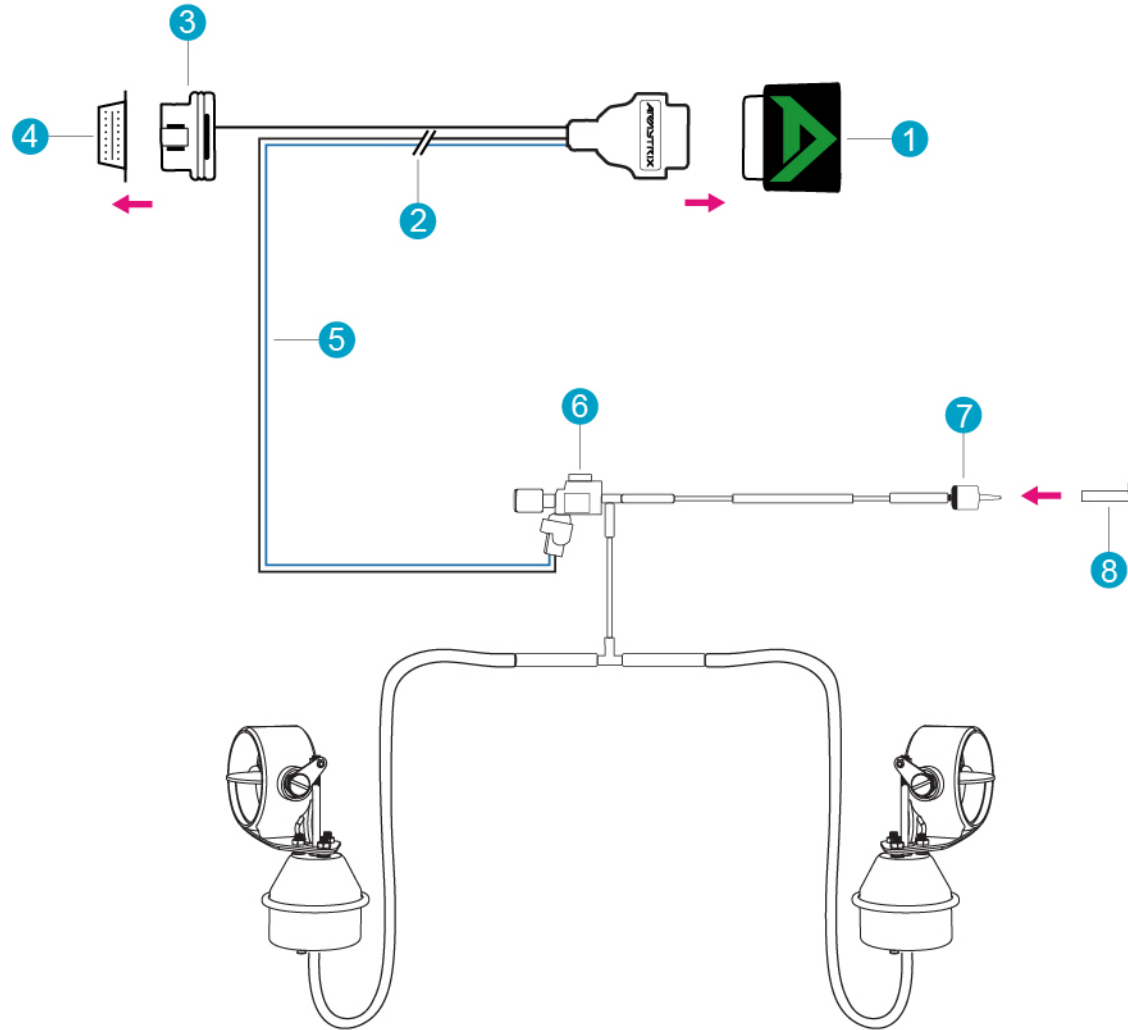




BMW 535i (F10)

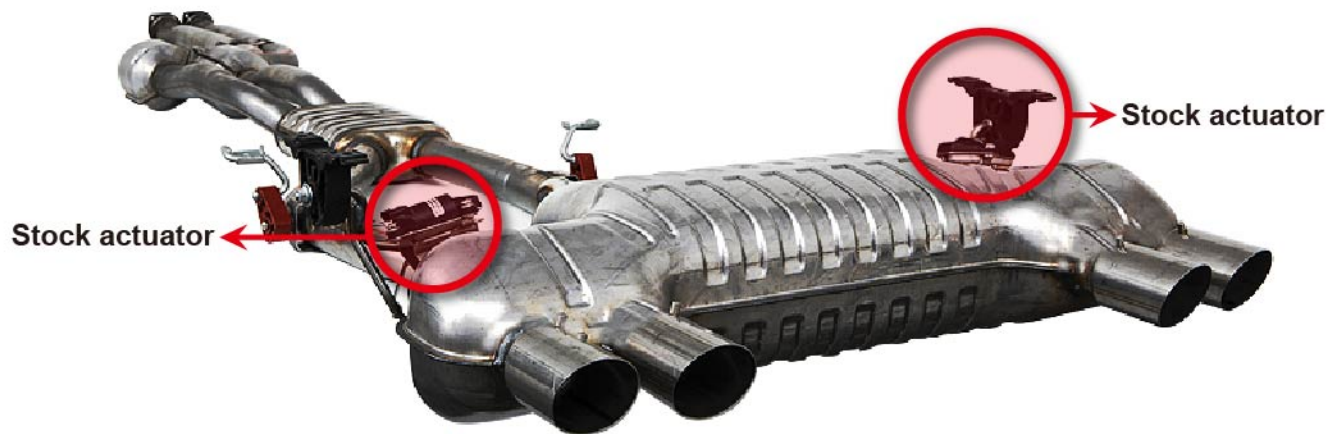
Vacuum Lines and OBDII Installation

BMW 535i (F10) Vacuum Lines and OBDII Installation

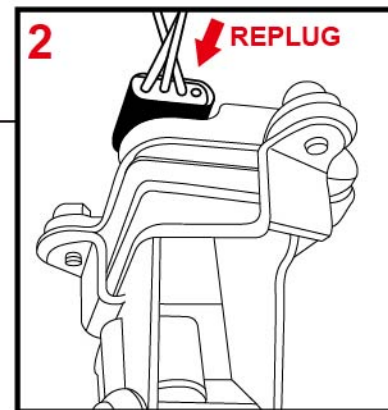
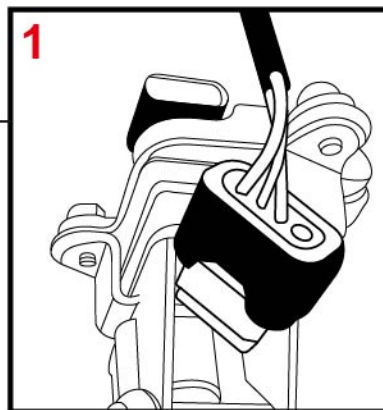


- 1 Bluetooth Dongle
- 2 Connector
- 3 OBDII Plug
- 4 Vehicle OBDII Port
- 5 Black & Blue Extension Cable
- 6 Solenoid Valve
- 7 One-Way Valve
- 8 Stock Vacuum Source

What to do with stock actuator?



*The image is for representation only. Actual parts may vary.



IMPORTANT NOTICE

1. Remove the stock actuator from the stock exhaust.
2. **MUST** re-connect the stock actuator back to its original wire to avoid irreparable damage.
3. Safely secure the actuator in a waterproof location.



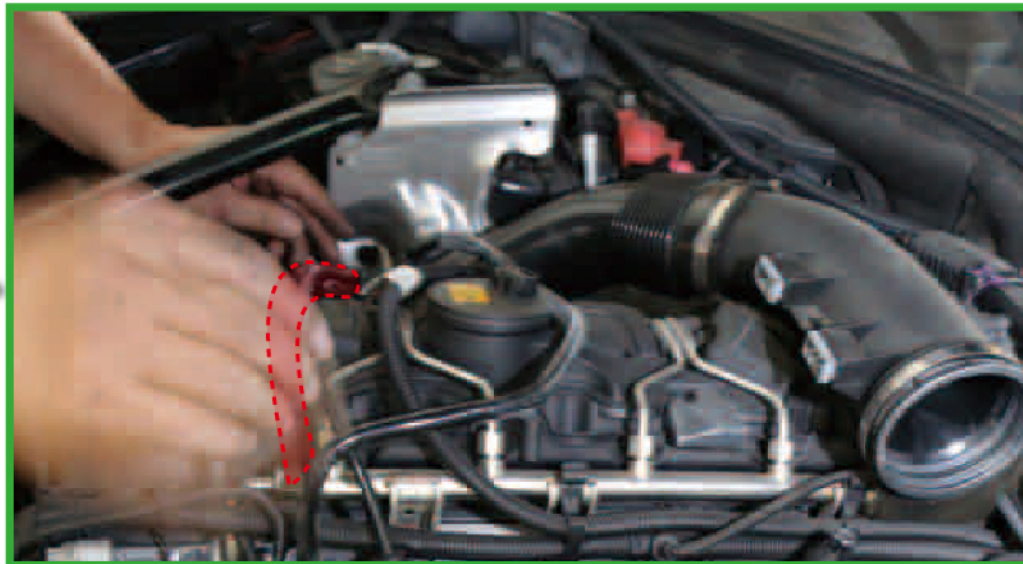
► 1. Open the engine hood



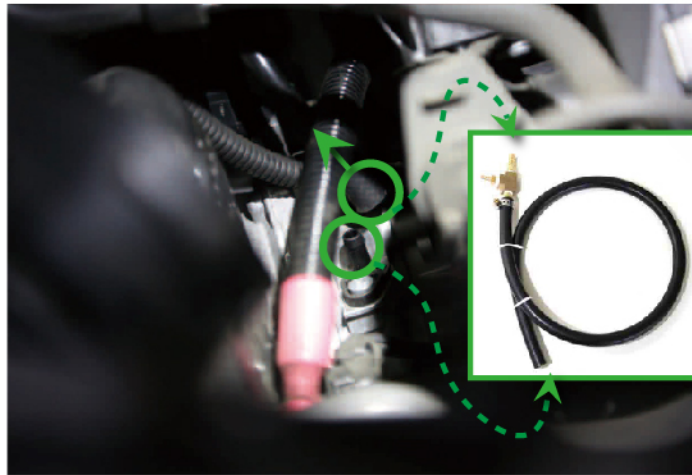
► 2. Dismantle the sound-proofing cover above the engine



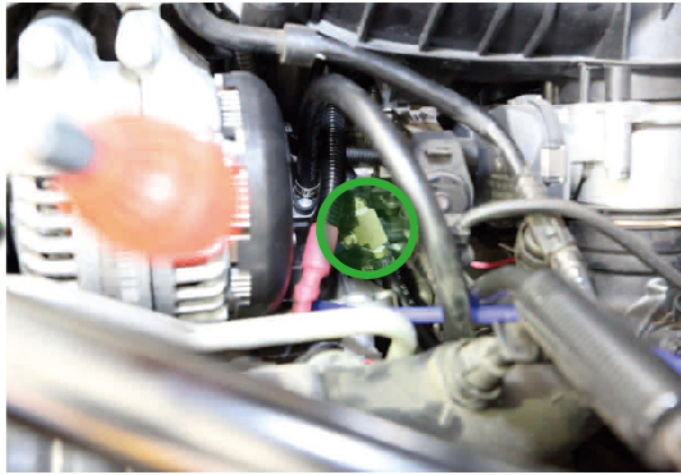
► 3. Dismantle the air filter



▶ 4. Disconnect the vacuum pump



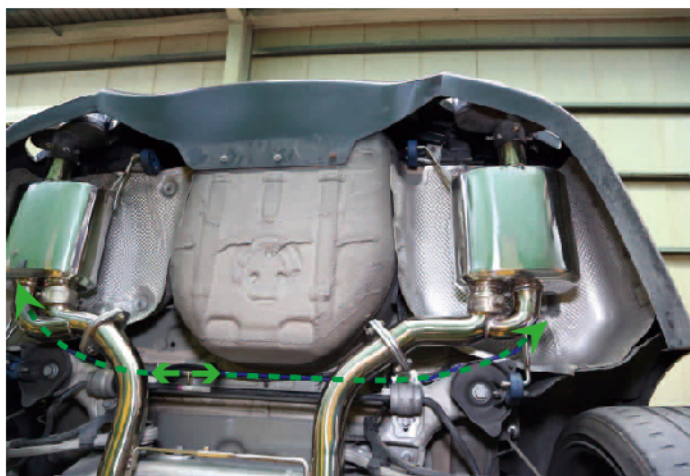
► 5. Correctly connect the vacuum tube as the picture shown



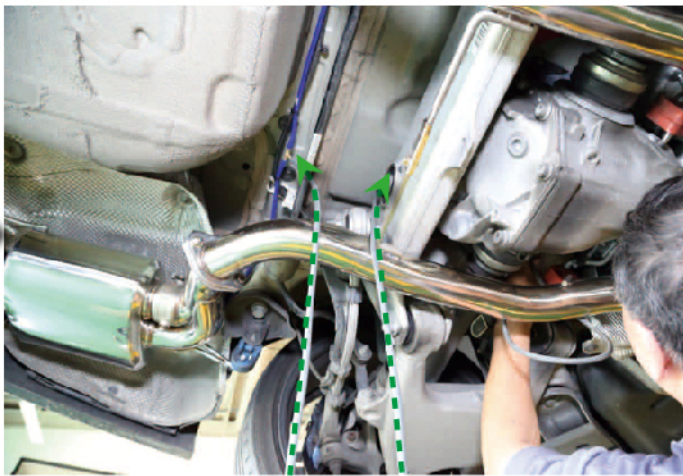
► 6. Once the three-way-valve is connected with the vacuum tube, place it back to the original position



► 7. Connect the ARM silicon vacuum tube to the solenoid as the picture shown



► 8. Correctly direct the vacuum tubes to the both side of the mufflers as the picture shown



► 9. Direct the three-way-valve tubes to the engine bay's solenoid position

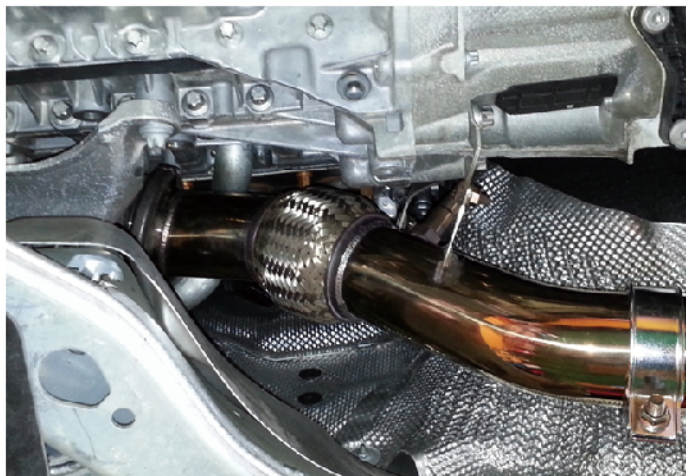


► 10. Direct the vacuum tube along to the left side of the chassis to the engine bay and tighten it with the plastic wrap

Exhaust System installation



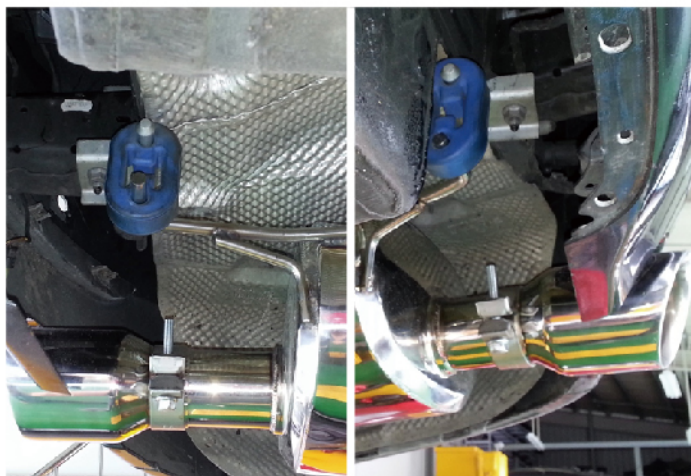
-
- ▶ 1.remove the stock exhaust system and cat-pipe



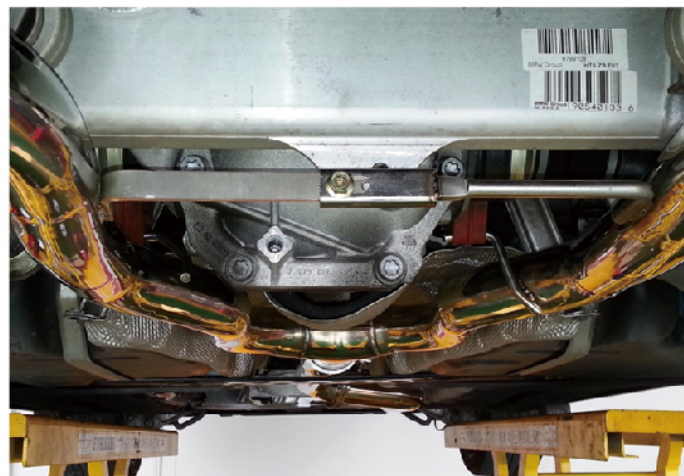
▶ 2. Install ARM cat-bypass pipe



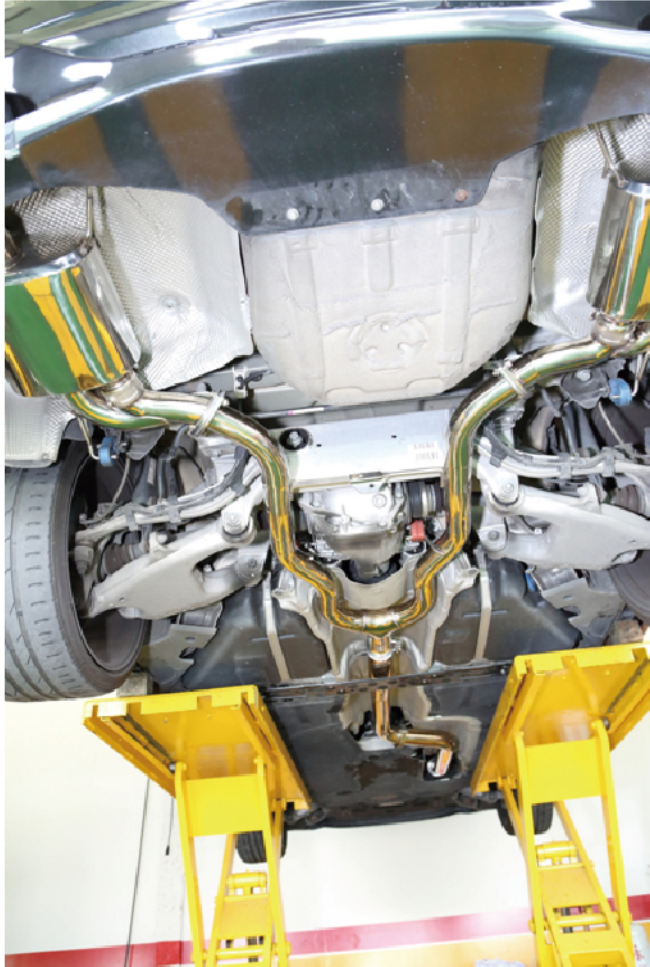
▶ 3. Install ARM L pipe, Mid-pipe and Y-pipe



▶ 4. Install left rear muffler pipe & right rear exhaust pipe



▶ 5. Adjust the distance between both side mufflers



Final installation

WARNING: check vehicle manufacturer manual for tightening torques (for dismantled stock parts)

WARNING: make sure all the nuts and bolts are sufficiently tightened. In case the exhaust system touches the cowl or other parts, repeat the adjustment of the exhaust system or contact your authorized dealer.

MAINTENANCE OF THE ARMYTRIX EXHAUST SYSTEM:

1. Clean the titanium exhaust components with a multi-purpose spray lubricant (WD-40 or equivalent), carbon fiber exhaust components with soft and dry cloth and stainless steel components with soft cloth sprayed with contact cleaner, then wipe with soft and dry cloth. A change in the color of the exhaust system is normal due to high temperatures.
2. Periodically make sure all the bolts and springs are sufficiently tight.
WARNING: clean all exhaust components before the first start of the engine or the stains will burn onto the surfaces!

► IT IS NORMAL FOR WHITE SMOKE TO COME OUT OF THE MUFFLER AT FIRST OPERATION. DO NOT STAND BEHIND THE MUFFLER AT FIRST OPERATION. DO NOT USE AUTOMOTIVE WHEEL CLEANERS OR ANY CLEANING PRODUCTS WHICH CONTAIN ACIDIC ADDITIVES TO CLEAN THE ARMYTRIX EXHAUST SYSTEMS.

EXHAUST WARRANTY

ARMYTRIX CORP warrants its products to be free of all defects in material and workmanship. Warranty extends only to the original buyer with proof of purchase and for the original vehicle on which the product(s) was installed. The warranty is not transferable and is valid for 18 months from the date of shipment. All shipping charges and duty fees associated with this warranty are the sole responsibility of the customer.

Upon receiving the product(s), it is the buyer's personal responsibility to examine the conditions of the part(s) prior to installation. If any part(s) proving defective in material and/or workmanship, the buyer must document the defect(s), contact ARMYTRIX immediately and return the product(s) within 30 days. We will replace all defective items free of charge, but the transportation cost incurred will be at buyer's own expense.

Warranty shall be considered void if damages to the product(s) were due to improper installation and/or improper use, including, but not limited to: off-roading, racing, unauthorized alterations to the product(s), lack of care, impact damage and any other damages caused by using the product(s) other than intended by the manufacturer.

Please be noted operating vehicle must not exceed 4000RPM with the valves closed. Anything above this limit could potentially damage the muffler irreparably and void the warranty. A friendly reminder, by de-catting the exhaust system the chances of triggering the 'Check Engine' signal are increased and our warranty does not cover this or other software incompatibilities. We recommend remapping the vehicle's ECU to prevent potential conflicts.

ARMYTRIX exhaust system(s) must be installed by certified technician(s) to maintain its warranty status. We reserve the right to withhold issuance of credit until defective part(s) has been returned and examined to determine reason of failure.

ARMYTRIX will not be responsible for any everyday wear-and-tear damages that occur in normal driving conditions; including, not limited to: man-made or natural damages to external surface, internal deterioration, discoloration, rust and corrosion. Wear-and-tears are unavoidable; we recommend regular check-ups and care to extend the product(s) lifespan and maintain its performance.

RETURN POLICY

Under the coverage of the warranty, all return must be done within 30 days. Once the defect product(s) is received it will take 7-14 days to process and determine the cause of failure. If defect is caused faulty manufacturing or fitment then you will be eligible to exchange or refund.

We do not accept return of products based on not meeting one's personal preference including, not limited to, exhaust sound, vibration, material and color. Any item that has been installed and used will no longer be eligible to be returned under any circumstances.

The shipping cost will be the responsibility of the buyer and do pack with care; we cannot accept product damaged during the process of shipping.